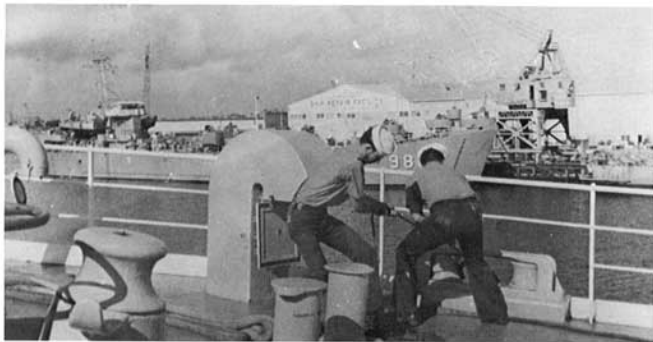


# GUAM



*LAT. 13° 26' N LONG. 144° 39' E*

The island of Guam was our next stop. For the crew, it meant a lot of shopping could be done. Guam also meant liberty and a chance to unwind.

As always there was work to be done: the KUKUI offloaded 11,252 pounds of cargo. Included in this cargo was clothing and books for the Catholic Missions in the Pacific.

When our work was completed we departed for that tropical paradise of Yap.